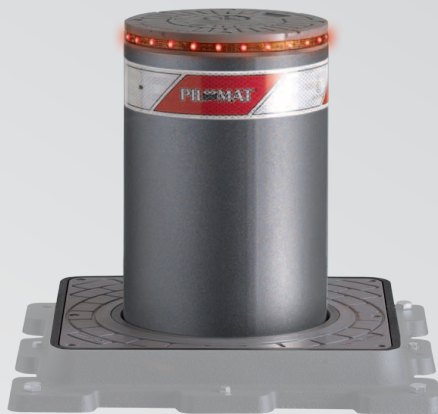


The **275/P 400A** automatic bollards are the top line products of PILOMAT range. The current models are the result of the development of more than 15 years of experience.

#### GENERAL FEATURES



- **hydraulic movement:** The most reliable technology for most intense use at all temperatures and weather conditions;
- **built-in hydraulic pump in the bollard:** This philosophy has many advantages, particularly in installations in locations with severe winter temperatures or when the installation requires a considerable distance (up to 80 metres) between the PILOMAT and the control unit;
- **patented system for the protection of handling:** to maximise the reliability of operations due to impact by vehicles on the cylinder that is put in motion;
- **wide range of optional configurations:** custom colours, flashing lights integrated into the head, intermittent sound signal, 220V solenoid valve (in case of power failure, the PILOMAT is lowered, releasing the gate), heat resistance installations in locations with harsh winter temperatures, UPS unit for operation in the temporary occurrence of power failure, equipment control, equipment accident prevention (see accessories and optional items).

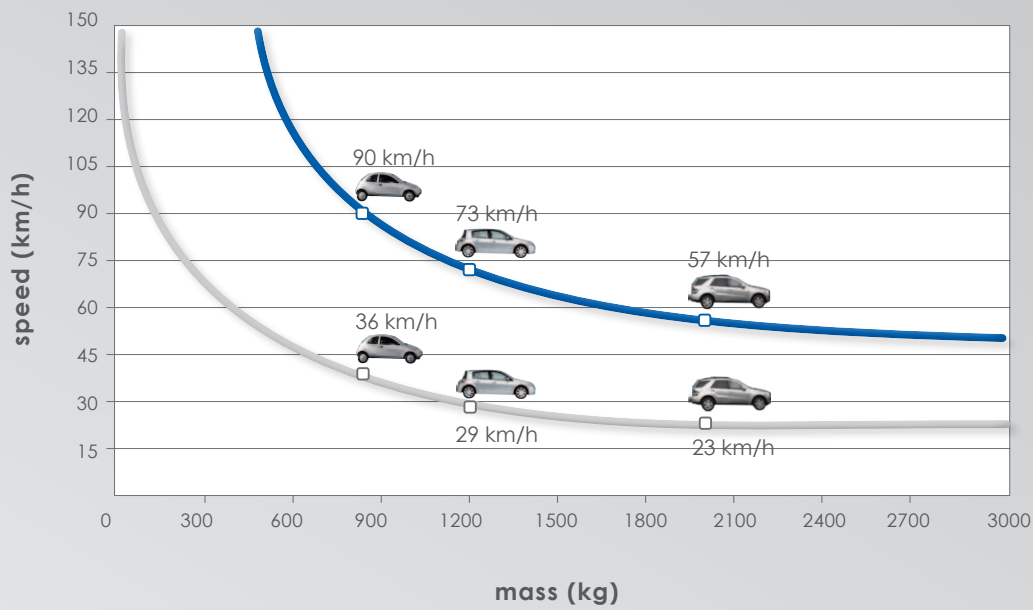
#### RECOMMENDED USES

Pedestrian Areas - Private Car Parks – Parking Company  
Private Driveways – Driveway Businesses – Commercial Driveways

|   |   |
|---|---|
| MOVING CYLINDER   | AISI 304 STAINLESS STEEL  |
| MOVING CYLINDER NOMINAL DIAMETER                                | 275 mm  |
| MOVING CYLINDER HEIGHT  | 380 mm  |
| MOVING CYLINDER FE 370 STEEL THICKNESS                          | -   |
| MOVING CYLINDER STAINLESS STEEL THICKNESS                       | AISI 304 :6 mm - AISI 316:4 mm                                      |
| MOVING CYLINDER FE 370 STEEL FINISH                             | -   |
| MOVING CYLINDER STAINLESS STEEL FINISH                          | POLYESTER POWDER PAINT - STANDARD GREY ANTHRACITE OR BRUSHED        |
| OTHER MOVING CYLINDER FINISH                                    | -   |
| REFLECTING ADHESIVE STRIP                                       | YES - HEIGHT 55 mm  |
| RISING SPEED  | 15 cm/sec   |
| LOWERING SPEED  | 25 cm/sec   |
| MANUAL EMERGENCY LOWERING                                       | YES (VERSION WITH RELEASE NO 220 = AUTOMATIC LOWERING)              |
| SAFETY REVERSAL PRESSURE SWITCH                                 | YES   |
| CONNECTION LINE TO CONTROL UNIT                                 | STANDARD 10 mt (MAXIMUM LENGTH: 80 mt)                              |
| HYDRAULIC PUMP  | BUILT-IN INTO THE PILOMAT   |
| PROTECTION CLASS  | IP 67   |
| TYPE OF USE   | IINTENSIVE - LIFE AVERAGE 2.000.000 MOVEMENTS - 2.000 MOVEMENTS/DAY |
| IMPACT RESISTANCE (WITHOUT DEFORMATION)                         | 40.000 J  |
| BREAKOUT RESISTANCE   | 250.000 J   |
| OPERATING TEMPERATURE   | - 40°C + 70°C (FOR LOW TEMPERATURES SEE HEATING RESISTANCE)         |
| NOMINAL PILOMAT WEIGHT (WITHOUT PIT)                            | 95 kg   |
| NOMINAL WEIGHT OF STANDARD PIT, WITH COUNTER-FRAME AND BRACKETS | 58 kg   |

## PILOMAT 275/P 400A

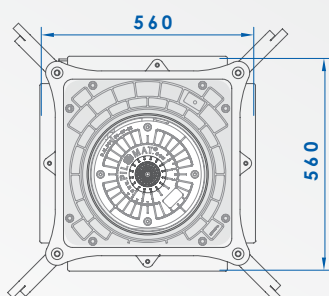
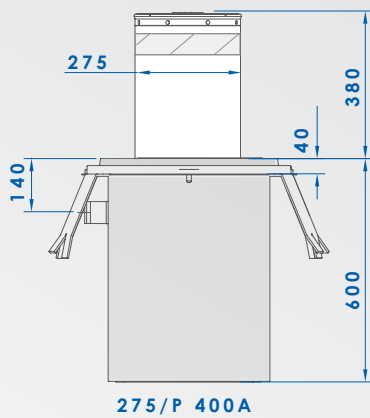
AUTOMATIC HYDRAULIC BOLLARDS WITH BUILT-IN PUMP



**BREAKOUT RESISTANCE 250.000 J**  
**IMPACT RESISTANCE 40.000 J**

800 Kg 1.200 Kg 2.000 Kg 6.800 kg

### MAIN DIMENSIONS



### OPTIONAL ITEMS



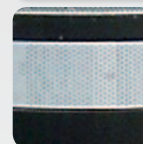
INTEGRATED FLASHING LIGHT IN THE HEAD



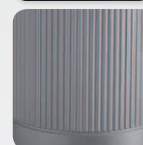
RAL PAINTING ON REQUEST



ANONYMOUS HEAD



NEUTRAL REFRACTED STRIP



RIBS ON CYLINDERS SURFACE

BUZZER ACOUSTIC SIGNAL DURING THE MOVEMENT

HYDRAULIC PUMP WITH BIODEGRADABLE OIL

CONNECTION LINE, UP TO 80 MT

E.F.O. CIRCUIT FOR EMERGENCY LIFT, 1"

ANTI-TAMPERING SCREW KIT FOR CROWN