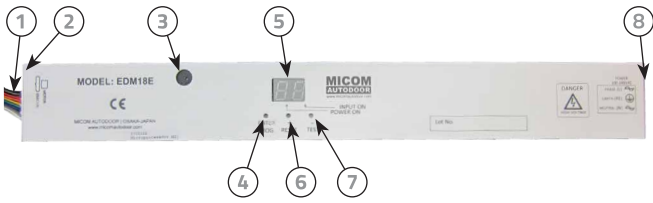


# M-E Control Box

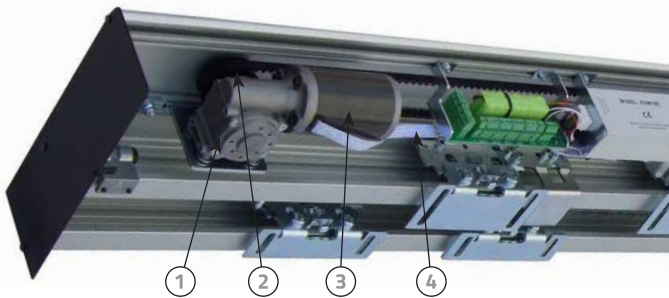
## EDM-E Control Box



No:	Description
1. EMICON	Connection of EMICON Harness to Control by Plug in
2. Motor	Connection of Motor to Control by Plug in
3. Buzzer	Audible indication of error status or other applications
4. Enter Prog.	Hold to enter programme mode
5. LED Display	LED Display is a visual display for the installer to correctly set up and operate EDM-E Operator.  LED Display: – LED1 – Function/Application – LED2 – Parameter Value – POWER LED – Power Indicator – INPUT LED – Signal Input Indicator
6. + Reset	'+' Operational settings – value can be increased. Reset Button – Operation factory settings can be restored.
7. Test	'-' Operational settings – value can be decreased. Test Button – Used to check the basic function of the operator when servicing or installation. Activation signal for Test open cycle.
8. Power	Input 200–240V AC 3pin Plug in

# M-E Motor Gear Box

## EDM-E Motor Gear Box



No:	Description
1.	Motor Mount Base with Vibration Proof Rubber
2.	Motor Pulley
3.	Brushless DC Motor
4.	Connection Harness to EDM MD Control Box

# Specification

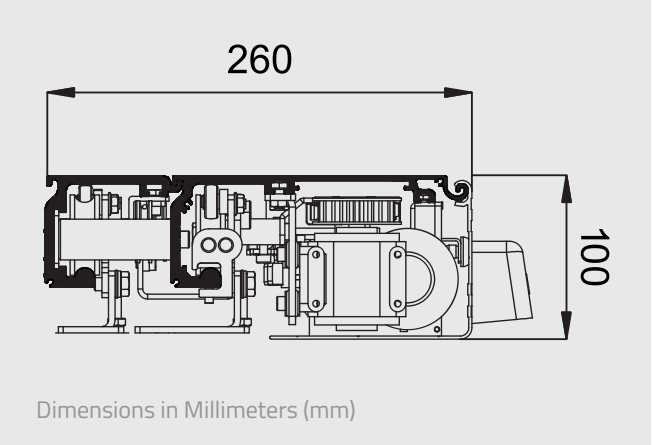
Model	EDM 18E-2S VSlim		EDM 30E-2S VSlim	
Application	Single	Double	Single	Double
Door Weight (max)	2x60kg	4x45kg	2x100kg	4x80kg
Open Door Speed	70 - 750mm/s (adjustable)		70 - 500mm/s (adjustable)	
Close Door Speed	70 - 450mm/s (adjustable)			
Power Consumption	100 - 240V AC / 50 - 60 Hz 2A 200W max		100 - 240V AC / 50 - 60 Hz 2A 300W max	
Power Output	24V DC, 300mA (for accessory only)			
Control System	Microprocessor			
Motor	Encloses Brushless DC Motor			
E-Lock	Electromagnetic Lock – Fail Secure Lk1/FailSafe Lk2 (optional)			
Battery	Allows open or closing in an emergency situation or when power fails			
Open Door Timer	0 - 60sec (10 steps adjustable)			
Partial Open / Energy Saving	5 - 90% (10 steps adjustable)			
Safety Obstruction	Detects when opening/closing by Safety Return/Safety Stop			
Pressure - Door to Frame	A small force may be adjusted in order to keep the door closed or open. Force from 0 to 8kg (5 step adjustable)			
Failure Detection	Upon detecting a failure an alarm is triggered and on the display			
Operating Temperature & Humidity	Ambient temperate 0°C - 50°C (no consideration or icing). Ambient humidity 30% - 85% (environment must be free of hazardous materials)			

# Delivery

## Delivery

MICOM EDM 18E-2S / 30E-2S VSlim - Supplied as follows:

- > **EDM 'COMPLETE OPERATOR'** consisting of: Base Rail, Cover, Control Box, EMICON Board, Motor Gear Box, End Covers, Tooth Belt, Belt Bracket Link Assembly, Connection Single & Double Door, Idle Pulley Assembly, Hanger Roller Brackets (Slow & Fast Door) and Stopper x 3.
- > **COMPLETE OPERATOR** - Standard Rail Length: Single Leaf - 3000mm, Double leaf - 6000mm





**UK / European Office**

The Grainger Suite // Regent Centre // Gosforth  
Newcastle upon Tyne // NE3 3PF // United Kingdom

**Telephone.** +44 (0)191 233 6323

**Facsimile.** +44 (0)191 284 0222

**Email.** [info@micomautodoor.com](mailto:info@micomautodoor.com)

**Head Office - Japan**

6th Floor // Marutake-Honmachi Building 6-18  
Honmachi 1-Chome Chuo-ku // Osaka 541-0053 // Japan

**Telephone.** +81 6 6265 1130

**Facsimile.** +81 6 6265 1132

**Email.** [info@micomautodoor.com](mailto:info@micomautodoor.com)

**100% Japanese Quality and Engineering**

MICOM & NHN are registered trademarks and divisions of Kenwa Company Limited, Osaka, Japan





# EDM-18E-2S / 30E-2S VSlim

Automatic telescopic sliding door operator  
Exceptional quality, economical prices

CE EN16005 Compliant

**MICOM**<sup>®</sup>  
**AUTODOOR**  
[www.micomautodoor.com](http://www.micomautodoor.com)



# Introduction

**EDM 18E-2S & EDM 30E-2S VSlim** automatic telescopic sliding door operator is the perfect choice for narrow entrances or when an extra clear opening width is required. Offering 60% free passage space and 25% more than traditional single or bi-parting sliding doors. This carefully engineered operator offers a very slim and compact profile at only 100mm in height with a depth of 260mm.

Its compact size and aesthetic housing design will compliment any installation project. Designed to automate dual panels of either single or bi-parting configuration.

Utilising our advanced microprocessor control unit with a brushless motor, produces near silent and smooth motion. Highly reliable, using only quality electronic parts, EDM E-2S telescopic door operator adapts effortlessly to varied door widths and weight capacities.

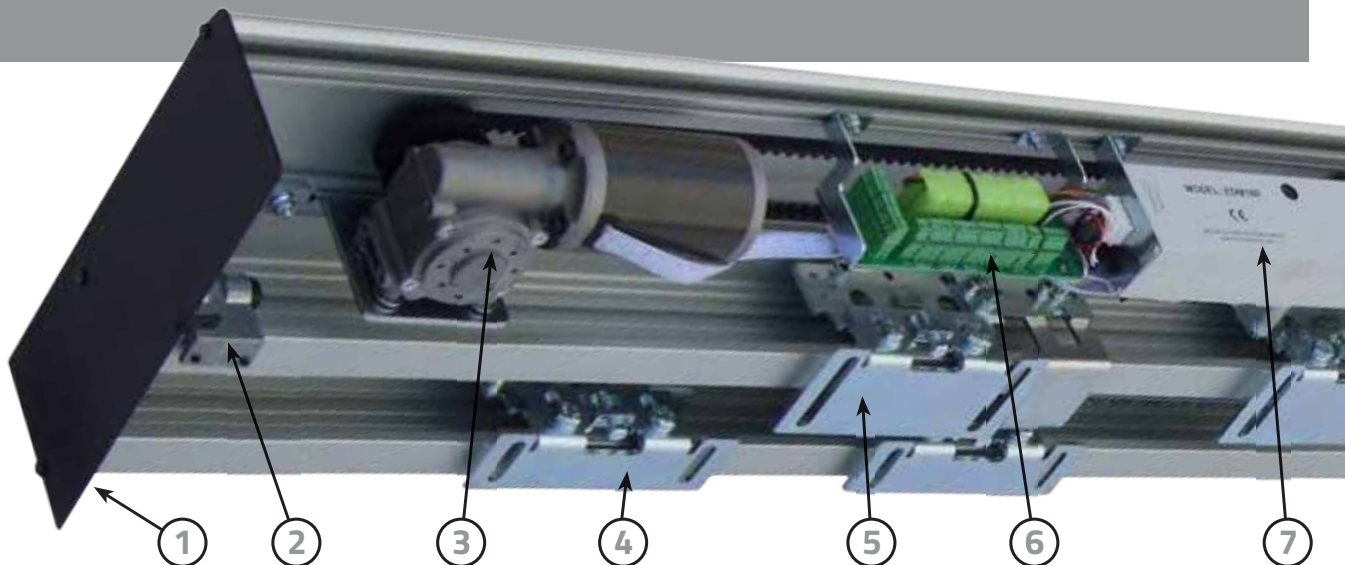
Installation is simple and achieved in several steps. Starting with a one-time learning cycle of the door stroke and offering variable function adjustment for single or double door leaves. Operational parameters can be adjusted to suit individual installations, through the easily accessible LED visual display found on EDM E Control box face.

Designed specifically to meet the highest demands of the European market, EDM 18E-2S & 30E-2S VSlim is CE, TUV and EN16005 compliant. Offering a host of benefits and features,

EDM E Series is truly cost effective, providing you with assured long term service.

## Main Features

- > Economical & Cost Effective Sliding Door Solution
- > Power input 100-240VAC (50/60Hz)
- > Memorized one time door stroke
- > Easily accessible sensor and threshold safety Inputs
- > 24V DC Power Output for Accessories
- > LED Digital Control Display
- > Wide Parameter Adjustments
- > Door Speed & Braking Adjustment
- > Energy Saving (% Open) Function
- > Emergency Stop (Open or Close)
- > Ratchet or Flip-Flop Function
- > Battery Open/Close with Monitor as standard
- > Electromagnetic Lock (Fail Safe/Secure) Option
- > Safe & Long Term Operation Guaranteed
- > Selector Switch supplied as standard
- > EN16005 compliant



## Product Summary

No:	Description
1.	End Cover
2.	End Stopper
3.	Motor Gear Box EDM 18E or EDM 30E
4.	Hanger Roller Bracket (Low Speed Door)
5.	Hanger Roller Bracket (High Speed Door)
6.	EMICON Board with Battery
7.	Control Box EDM E Series
8.	Belt Tightening Bracket
9.	Cover Support for Maintenance
10.	Base Rail
11.	Idle Pulley



## EDM-E Series

### EDM 18E



### EDM 18E VSlim



### EDM 30E



### EDM18E RD



# MICON Communicator

## EMICON Communicator - Quick and Easy Connections to Accessories and Ancillaries

Our **EMICON** interface board offers a quick means of installation. Communication of all accessory and safety signals are combined with battery input and lock control. Working in parallel, these signals are controlled via our Selector Switch for greater ease of operation by the end user.

MICOM Rotary Key Selector Switch is supplied as standard together with EDM-E Series operator allowing selection of 4 separate door modes. In a fire retardant black plastic mount box with cover design in white, MICOM function selectors can be fitted to walls or aluminium frames alike.

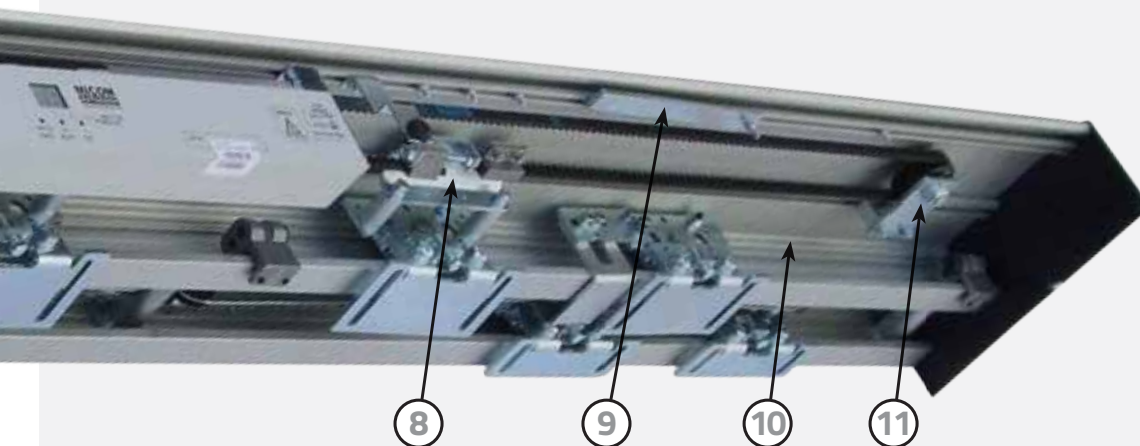
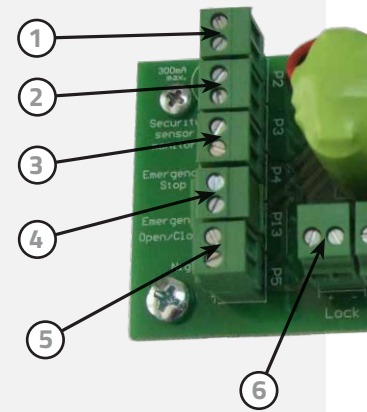
### Functions:

- > Lock – Night/Closed
- > Exit Only
- > Automatic
- > Hold Open



The **EMICON** communicator interconnects the Control Unit with the different peripheral components as follows:

No:	Description
1.	24V Output 0.3A max
2.	Monitoring Input
3.	Emergency Stop Input
4.	Emergency Open/Close Input
5.	Night Switch
6.	E-Lock Output
7.	Internal Sensor with 24V Output

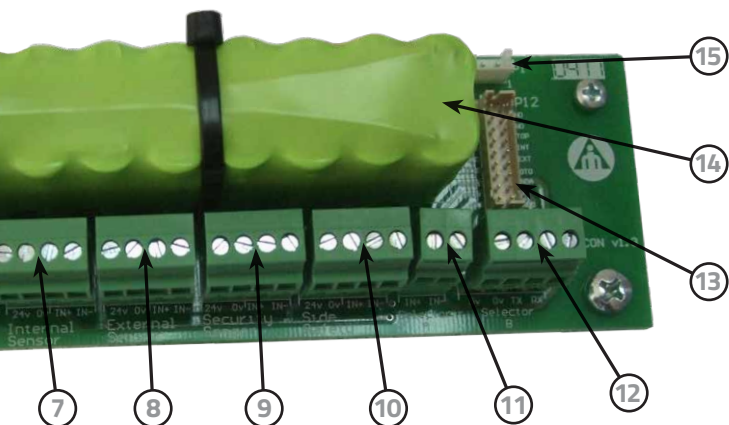


**EDM 18E-2S / 30E-2S VSlim** complies with all new EU regulations (EN16005) for enhanced automatic door safety. Designed for use with a new range of sensors such as BEA IXIO-S & Optex OA-Axis-T.

**IXIO-S** is an active infrared presence sensor. The tridimensional area of its infrared curtain protects the users from any contact with the doors. Adjustment is made easier with an LCD screen offering 10 different widths of curtains, to cover the full travel area of the door.

**OA-AXIS-T Series** based on active infrared technology. Developed as a combination sensor for threshold safety and activation, the OA-Axis T is in compliance with the latest European and local regulations as EN 16005 and DIN 18650, tested and approved by the German test organisation TÜV. Due to its variety in output options the OA-Axis series meets the requirements in various markets throughout Europe.





No:	Description
8.	External Sensor with 24V Output
9.	Safety Beam Sensor with 24V Output
10.	Side Screen Sensor with 24V Output
11.	Selector A
12.	Selector B
13.	Control Unit Connector
14.	Battery
15.	Battery Connector

**EDM 18E-2S / 30E-2S VSlim** when used without monitoring can also accept all current sensors available in the world market today, such as BEA Eagle & Optex OA-203C together with threshold safety beam protection.

**EAGLE Series** is a microwave sensor which detects movement. Utilising a planar antenna together with multi directional detection modes, the EAGLE offers high levels of stability and reliability. It is the solution for all types of automatic doors, irrespective of the



**OS-12C Safety Beam** is an active infrared safety beam system. Its amplifier and sensor heads are designed for fast, simple installation while maintaining the highest standards of safety and reliability. Recognized by door professionals worldwide for its reliability and resistance to sunlight and other interference.



# Accessories

**MICOM Digital Selector Switch** offers further options of door control. A digital touchpad, allows selection of 6 separate door modes. Economic in design, MICOM Digital Selectors are easy to install and operate. Supplied in a fire retardant black plastic mount box, with attractive cover design in white, our function selectors can be fitted to walls or aluminium frames alike.

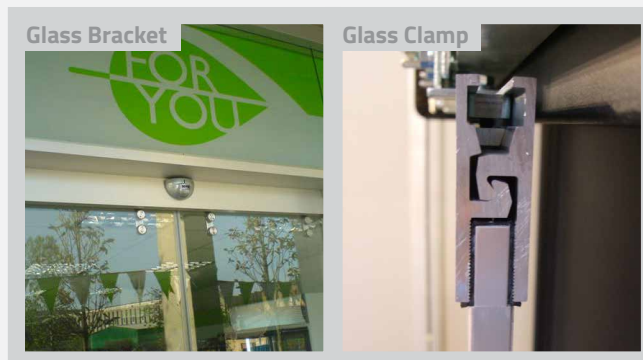
## Functions:

- > Lock – Night/Closed
- > Exit Only
- > Entry Only
- > Automatic
- > Hold Open
- > Half Open



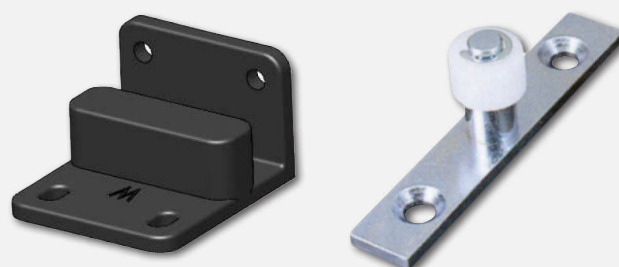
**Door Profile Solutions** - Various Fixed and Moving profile designs available without glass.

## Glass Fittings



**Glass Bracket** - For 10mm glass door 90kg max / 1.2m width max & 12mm glass door 120kg max / 1.5m width max

**Glass Clamp** - For 10mm glass door 100kg max / 1.5m width max



**Floor Guides** - Various floor guides for framed and frameless glass doors available.